

# *Composite Door*

C O L L E C T I O N



*Traditional Doors*



*Contemporary Doors*

 **xtremedoor**  
Keeping the heat in and intruders out



## Why Choose a Composite **XtremeDoor**?

Composite doors offer the look and feel of a timber door without any of the inherent problems, such as cracking, bowing or twisting.

They have a high-density foam core which offers excellent strength and thermal performance, and a durable Glass Reinforced Plastic (GRP) skin to protect from the elements. GRP is the same materials that is used to make the hull of lifeboats - demonstrating just how tough it really is!

And unlike timber, composite doors are incredibly low maintenance - an occasional wipe over with a damp cloth will restore it to its original finish.



### Key to Glazing Icons

- ▲ These doors are our Triple Glazed options.
- Obscure glass choice not required.
- These require obscure patterned backing glass. See 'Textured Glass Options' on page 39.

All images portrayed in this brochure should not be reproduced without specific written permission from the manufacturer. Images, designs and colours are for illustrative purposes only and are only as accurate as the printing process allows.

Rosewood and Light Oak are available both sides. The wood effect finishes on the door and outer frame differ slightly due to the nature of different materials involved.

All information within this brochure is provided for guidance only and is given in good faith, but without warranty or guarantee of any kind, whether implied or expressed. Our policy is to continually improve products, therefore methods, materials and changes of specification may be made from time to time without prior notice.





# **Xtremedoor** VS **OtherDoor**

Keeping the heat in and intruders out

## How does XtremeDoor compare with industry standard specifications?

### 4mm GRP Skin

Standard are 2mm or less

- > Doc Q Compliant
- > High-impact Resistance
- > Low Maintenance and UV Stable

### 5 Hook Lock<sup>\*</sup>

Standard is 2 Hook

- > Increased Security
- > Anti - Snap, Pick, Drill & Bump Cylinders

### Triple Seal Frame

Standard are Dual Seal

- > 2 Brush - 1 Bubble
- > Tighter Seal - Can withstand Hurricane Force Winds
- > Weatherproof - Eliminating drafts
- > Low U-values - Keeps the heat in

### 25 Year Hardware Guarantee

Standard is 12 Months

- > 25 Year Finish Guarantee
- > Corrosion Proof
- > Salt Spray Tested

**NOT ALL  
DOORS  
ARE MADE  
EQUAL**

**XtremeDoor™**

<sup>\*</sup> Long Bar Pull Handles and Cylinder Pulls come with a 3-point dead bolt auto-fire lock



# Even the Police Struggle to Force Entry Through an **XtremeDoor!**

**67%** of burglars  
break in through  
**THE DOOR**  
official crime statistics from the home office

It takes time and specialist equipment to break through an XtremeDoor.

That's because an XtremeDoor has a rigid polymer subframe, a high density CUC-free polyurethane foam core, impact-resistant GRP skin, a five point locking system and an anti-snap, bump, pick and drill cylinder fitted with a guard for ultimate security.

Don't just take our word for it - the XtremeDoor has PAS 24 2016 Enhanced Security accreditation and Secured by Design endorsement, so you can rest assured your home is safe.



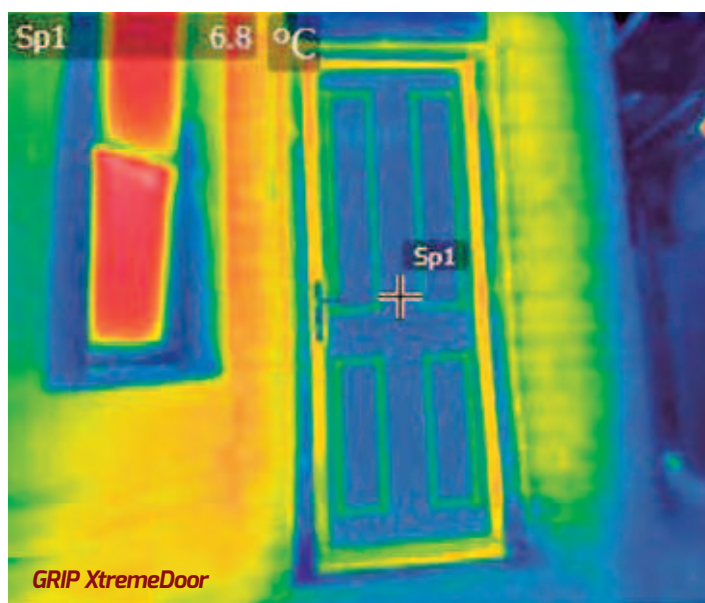
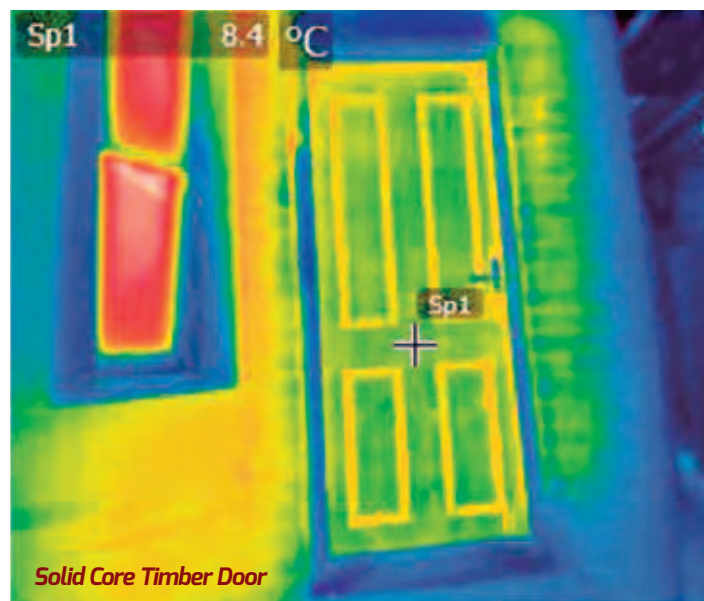
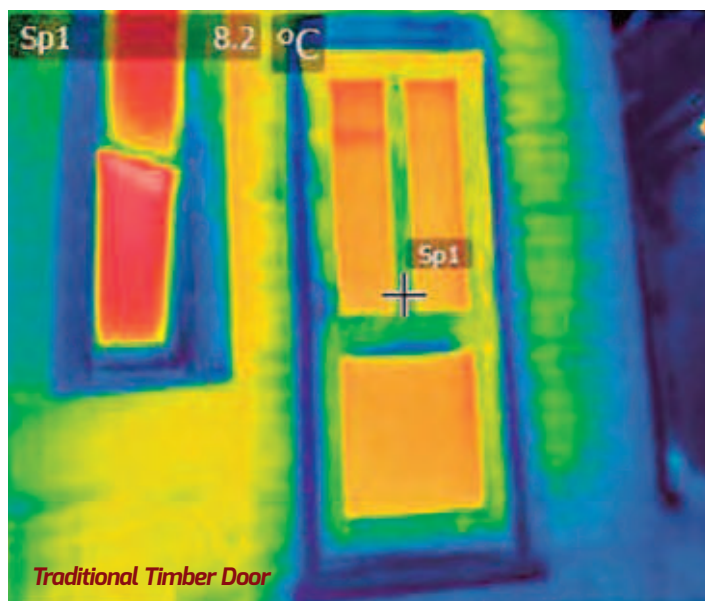
Association of  
Composite  
Door  
Manufacturers



Official Police Security Initiative

# Thermal Performance

Composite doors are much more thermally efficient than either timber or PVC, and our doors are manufactured to the highest quality standards, making them more thermally efficient by design.



A 'U-value' is the overall heat transfer co-efficient that describes how well a building element conducts heat. A low U-value usually indicates high levels of insulation.

In the thermal images, the red, yellow and green areas show high levels of heat escaping from a traditional door.

By contrast, the dark blue areas on the XtremeDoor indicate excellent insulating qualities.

The warm foam core allows the door to have a significantly better 'U-value' than traditional timber doors, PVC skinned timber doors and steel doors, and our entire range meets with the requirements of the current Building Regulations.

There are various upgrades to glass options which increase the thermal performance of the door. The combination should keep your home warmer and could help reduce your energy bills.



# York

U-Value from 1.4W/m<sup>2</sup>K

A classic design with two simple glass panels. Suitable for any modern or traditional style of property.



Door Colour: Chartwell Green | Decorative Glass: Eternity ●

Our Murano design is a truly modern decorative glass option and is available in Black, Blue, Green and Red to complement or contrast with the door colour





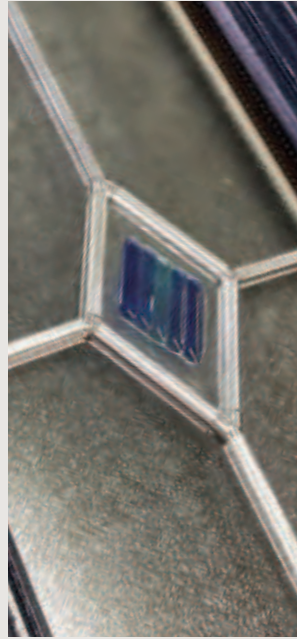
Door Colour: Anthracite Grey  
Decorative Glass: Bohemia



Door Colour: Blue  
Decorative Glass: Blue Fusion



Our Fusion glass is available in either blue or green tile options and the choice of zinc or brass Camino



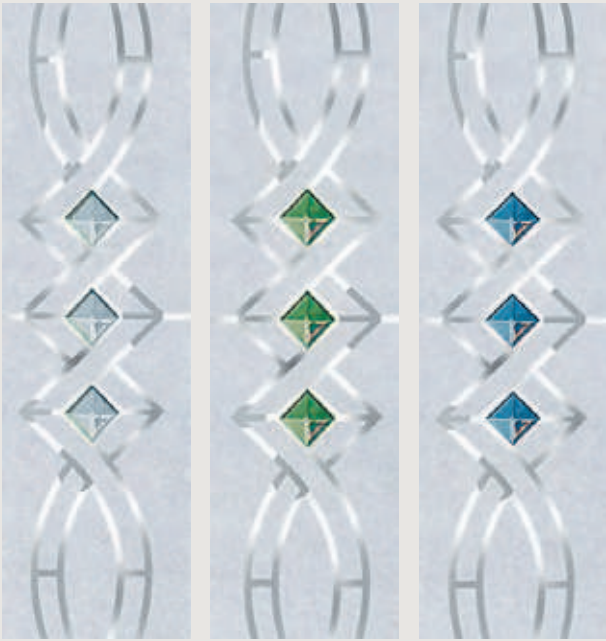
Door Colour: Black  
Decorative Glass: Murano Black



Door Colour: Duck Egg Blue  
Decorative Glass: Toledo



Our Twist glass is available with either a clear, emerald or sapphire decorative feature centre tile



Door Colour: Light Oak  
Decorative Glass: Clear Twist



Door Colour: Black  
Decorative Glass: Rhea



Door Colour: Agate  
Decorative Glass: Etch Border



Door Colour: Moondust  
Decorative Glass: Elderton





Door Colour: Cream White  
Decorative Glass: Etch Splendour



Door Colour: Red  
Decorative Glass: Crystal Red



Our Crystal glass is available with either a black, blue, green or red decorative feature centre tile



Door Colour: Chartwell Green  
Decorative Glass: Knightsbridge



Door Colour: Slate  
Decorative Glass: Kara Zinc

Also Available in Brass



# Cambridge & Windsor

U-Value from 1.4W/m<sup>2</sup>K

With its arched or raked panel tops, the Cambridge or Windsor will most certainly, add a touch of distinction to properties of any age.



Door Colour: Light Oak | Decorative Glass: Elderton ●



Cambridge



Windsor





Door Colour: Reed Green  
Decorative Glass: Murano Green



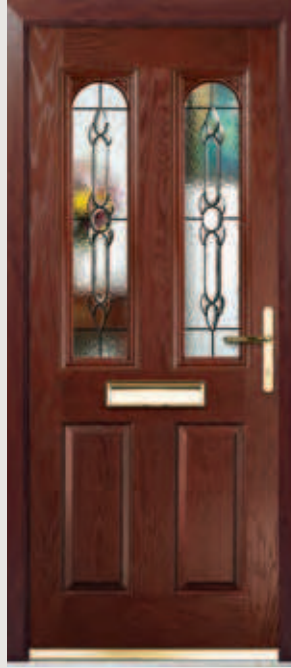
Door Colour: Cream  
Decorative Glass: Clear Twist



Door Colour: Duck Egg Blue  
Decorative Glass: Knightsbridge



Door Colour: Rosewood  
Decorative Glass: Bohemia



Door Colour: Royal Magenta  
Decorative Glass: Crystal Black



Door Colour: Blue  
Decorative Glass: Kara Zinc



Also Available in Brass



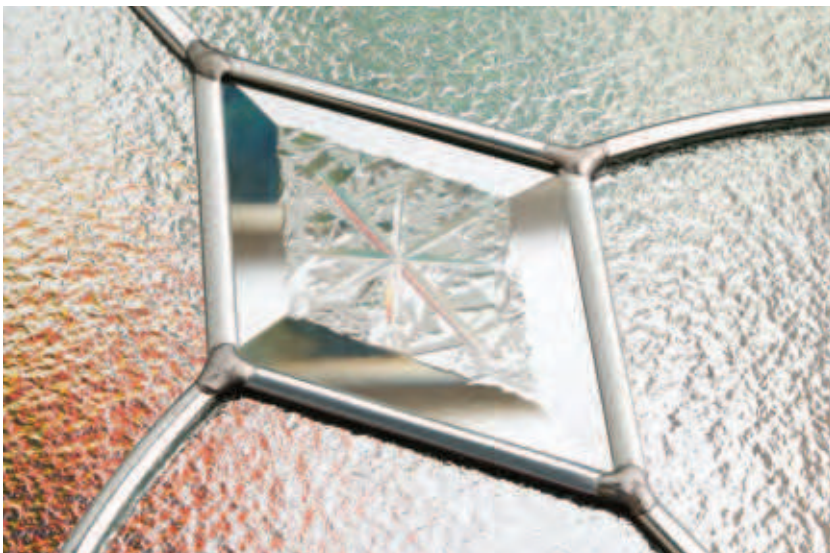
# Georgian One

U-Value from 1.2W/m<sup>2</sup>K

Featuring a distinctive semi-circular glazing panel, this door is ideal for the street-front property or town house.



Door Colour: Black | Decorative Glass: Diamond Classic ▲ ●





Door Colour: Green  
Decorative Glass: Silvaner ■



Door Colour: White  
Decorative Glass: Gavalas ■



Door Colour: Slate  
Decorative Glass: Etch Border ■



Door Colour: Blue  
Decorative Glass: Georgian Bar ■



Door Colour: Chartwell Green  
Decorative Glass: Prism (only available in Chartwell Green) ●



Door Colour: Anthracite Grey  
Decorative Glass: Murano Black ■



Door Colour: Rosewood  
Decorative Glass: Crystal Red ▲ ●





# Georgian Three

U-Value from 1.3W/m<sup>2</sup>K

The stately design of this 3-panel door echoes the classic architecture of the Regency period.



Door Colour: Royal Magenta | Decorative Glass: Gavalas





Door Colour: White  
Decorative Glass: Georgian Bar ■



Door Colour: Duck Egg Blue  
Decorative Glass: Silvaner ■



Door Colour: French Blue  
Decorative Glass: Crystal Blue ▲ ●



Door Colour: Black  
Decorative Glass: Etch Border ■



Door Colour: Blue  
Decorative Glass: Diamond Classic ▲ ●



Door Colour: Anthracite Grey  
Decorative Glass: Rhea ■



# Edwardian Two & Four

U-Value from 1.2W/m<sup>2</sup>K



Door Colour: Blue Green | Decorative Glass: Silvaner ■



A stylish, traditional door offering varying degrees of privacy to street-front properties or those with shared access.



Edwardian Two



Edwardian Four



Solid Option



Door Colour: Anthracite Grey

Decorative Glass: Rhea



Door Colour: Chartwell Green

Decorative Glass: Diamond Classic



Door Colour: Black

Decorative Glass: Murano Black



Door Colour: Red

Decorative Glass: Crystal Red



Door Colour: Blue

Decorative Glass: Etch Border



Door Colour: Pebble

Decorative Glass: Diamond Classic



# Victorian

U-Value from 1.4W/m<sup>2</sup>K

The Victorian features a large single glass panel to allow plenty of light into those spacious turn-of-the-century hallways.



Door Colour: Blue | Decorative Glass: Elderton ●



Victorian



Cottage Half Glazed





Door Colour: Anthracite Grey  
Decorative Glass: Etch Splendour



Door Colour: Black  
Decorative Glass: Murano Black



Door Colour: Duck Egg Blue  
Decorative Glass: Rhea



Door Colour: Reed Green  
Decorative Glass: Rioja



Door Colour: Chartwell Green  
Decorative Glass: Etch Border



Door Colour: White  
Decorative Glass: Enclosed Venetian Blind



# Devon

U-Value from 1.4W/m<sup>2</sup>K

Another design which allows plenty of light into reception rooms or directly into a kitchen.



Door Colour: Anthracite Grey | Decorative Glass: Rhea ■



Door Colour: Rosewood  
Decorative Glass: Mosel ■



Door Colour: Green  
Decorative Glass: Mirambello ■



Door Colour: Royal Magenta  
Decorative Glass: Royal Sparkle ■



Door Colour: Agate  
Decorative Glass: Murano Black ■





Door Colour: **Blue Green**  
Decorative Glass: **Reflections** ▲ ●



Door Colour: **Black**  
Decorative Glass: **Simplicity Zinc** ▲ ●

Also Available in Brass



Door Colour: **Pebble**  
Decorative Glass: **Murano Black** ■



Door Colour: **Moondust**  
Decorative Glass: **Bohemia** ■



# Regal

U-Value from 1.4W/m<sup>2</sup>K

With its American style, large glazed feature panel, the Regal door is proving to be just as popular here in the UK as it is 'over the pond'.

**Extended**  
Lead Time



Door Colour: **Slate** | Decorative Glass: **Simplicity Zinc** ▲ ●





# Tudor

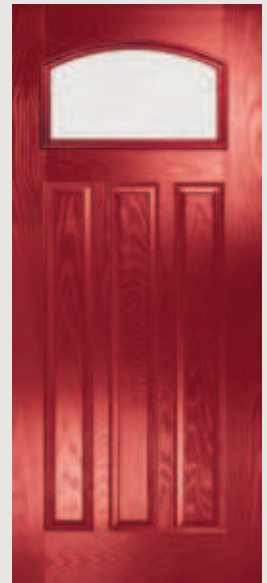
U-Value from 1.4W/m<sup>2</sup>K

Reminiscent of the door styles of the 1930's, the Tudor door is also available as a solid door option as well as a glazed version.

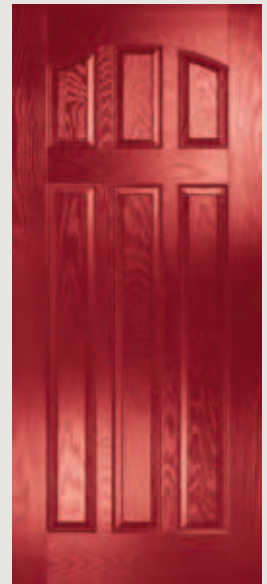
**Extended**  
Lead Time



Door Colour: Light Oak | Decorative Glass: Simplicity Zinc ▲ ●



Tudor



Solid Option



Simplicity Brass Option

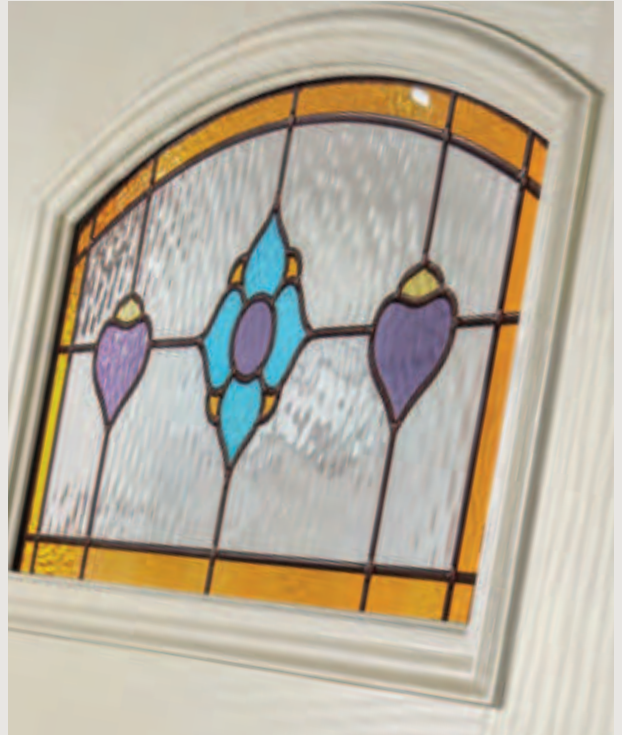




Door Colour: Chartwell Green  
Decorative Glass: Reflections



Door Colour: Cream White  
Decorative Glass: Dorchester Amber



Door Colour: Slate  
Decorative Glass: Havana



Door Colour: Moondust  
Decorative Glass: Etch Border



# Cottage One

U-Value from 1.2W/m<sup>2</sup>K



Door Colour: Chartwell Green | Decorative Glass: Diamond Classic ▲ ●



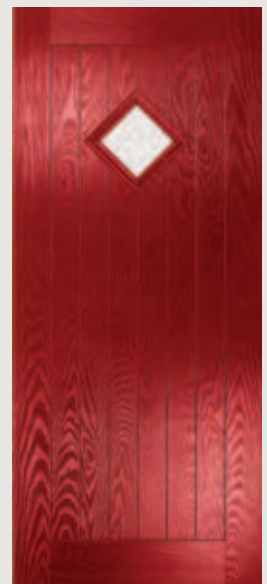
Antique Black Letterplate



Unlike other 'cottage' doors in the market, our cottage door has a unique 'offset etched' detailing and comes in two glazing styles.



Cottage One



Cottage Diamond



Cottage Solid



Door Colour: Green  
Decorative Glass: Murano Green



Door Colour: Signal Yellow  
Decorative Glass: Etch Border.



Door Colour: Anthracite Grey  
Decorative Glass: Rhea



Door Colour: Light Oak  
Decorative Glass: Silvaner



Door Colour: Light Pink  
Decorative Glass: Bullion



Door Colour: Duck Egg Blue  
Decorative Glass: Gavalas



# Farmhouse Square

U-Value from 1.2W/m<sup>2</sup>K

This design is a take on the classic cottage style door and will suit those looking for a rural look.



Door Colour: Chartwell Green | Decorative Glass: Georgian Bar



Farmhouse Square is available with Clear, Satin and Stippolyte glazing options only!

Door Colour: French Blue  
Decorative Glass: Stippolyte Only



Door Colour: Royal Magenta  
Decorative Glass: Satin



Door Colour: Black  
Decorative Glass: Georgian Bar



Available in: White, Chartwell Green, Black and Anthracite Grey Foil Finishes





Door Colour: **Slate**  
Decorative Glass: **Diamond Classic** ▲ ●



Door Colour: **Pebble**  
Decorative Glass: **Silvaner** ■



Door Colour: **Black**  
Decorative Glass: **Etch Border** ■



Door Colour: **Duck Egg Blue**  
Decorative Glass: **Glazed** ■



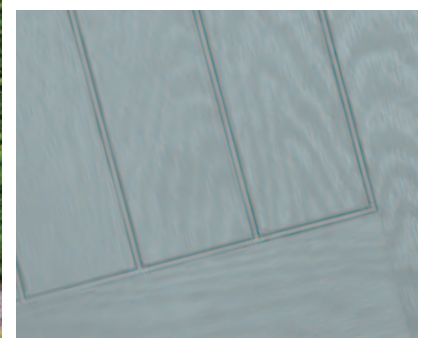
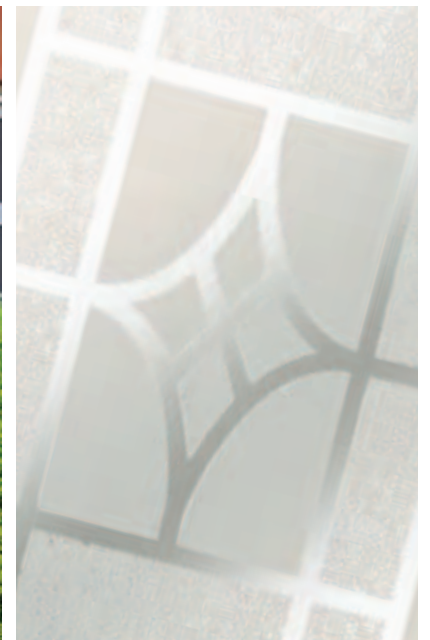
# Farmhouse One

U-Value from 1.1W/m<sup>2</sup>K

Farmhouse One is a simple design that will bring out the countryside look in your property.



Door Colour: **Moondust** | Decorative Glass: **Silvaner** ■

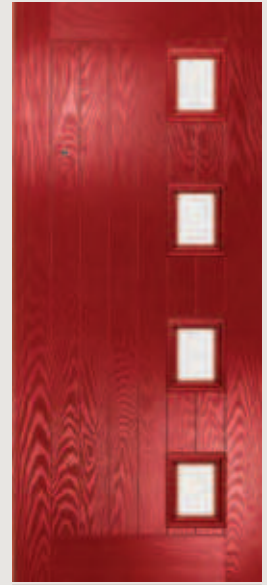


# Cottage Four

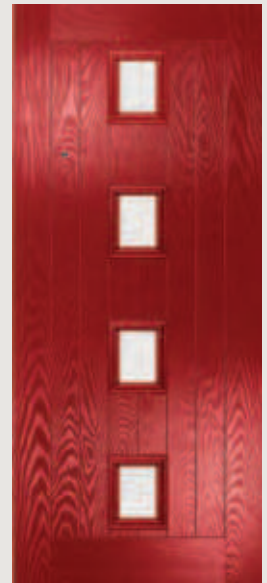
U-Value from 1.3W/m<sup>2</sup>K



The Cottage Four is a very popular contemporary door design with the choice of lock, centred or hinge side glazing positions.



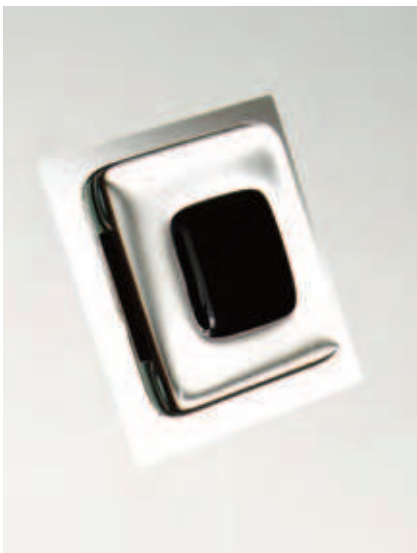
Glazed Lock Side as Standard



Glazed Centre by Request



Glazed Hinge Side by Request





Door Colour: **Black**  
Decorative Glass: **Crystal Black** ▲●



Door Colour: **Moondust**  
Decorative Glass: **Silvaner** ■



Door Colour: **Anthracite Grey**  
Decorative Glass: **Satin**



Door Colour: **Light Oak**  
Decorative Glass: **Glazed** ■



Door Colour: **Blue**  
Decorative Glass: **Etch Border** ■



Door Colour: **Slate**  
Decorative Glass: **Diamond Classic** ▲●



# Napoli

U-Value from 1.3W/m<sup>2</sup>K

A bold and contemporary design with a subtle Art Deco influence



Door Colour: Anthracite Grey | Decorative Glass: Satin



Door Colour: Slate  
Decorative Glass: Rhea



Door Colour: Moondust  
Decorative Glass: Diamond Classic



Door Colour: Rosewood  
Decorative Glass: Glazed



Door Colour: Chartwell Green  
Decorative Glass: Etch Border





Door Colour: Anthracite Grey  
Decorative Glass: Etch Border



Door Colour: Slate  
Decorative Glass: Rhea



Door Colour: Blue  
Decorative Glass: Satin



Door Colour: Light Oak  
Decorative Glass: Glazed



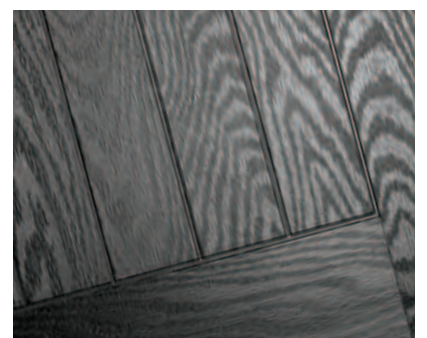
# Stuart

U-Value from 1.2W/m<sup>2</sup>K

A simple design with a single offset or central glazed panel providing a contemporary and modern statement.



Door Colour: Black | Decorative Glass: Glazed



# Jacobean

U-Value from 1.3W/m<sup>2</sup>K

The inline slim glazing details on the Jacobean door is inspired by the contemporary European door look.



Door Colour: Slate | Decorative Glass: Satin





Door Colour: Agate  
Decorative Glass: Silvaner ■



Door Colour: Light Oak  
Decorative Glass: Etch Border ■



Door Colour: Black  
Decorative Glass: Murano Black ■



Door Colour: Chartwell Green  
Decorative Glass: Diamond Classic ▲ ●



Door Colour: Moondust  
Decorative Glass: Rhea ■



Door Colour: Anthracite Grey  
Decorative Glass: Glazed ■



# Verona

U-Value from 1.4W/m<sup>2</sup>K



Door Colour: **Black** | Decorative Glass: **Reflections** ▲ ●



With its contemporary linear etched detailing, the Verona is a stunning door available with glazing detail or as a solid door.

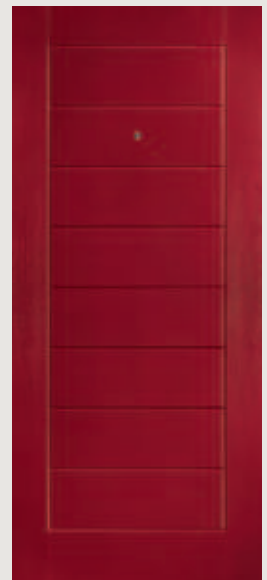
**Extended**  
Lead Time



Glazed Lock Side as Standard



Glazed Hinge Side by Request



Solid Option



Door Colour: **Slate**  
Decorative Glass: **Glazed** ■



Door Colour: **Light Oak**  
Shown as a Solid Door option



Door Colour: **Moondust**  
Decorative Glass: **Murano Black** ■



Door Colour: **Pebble**  
Decorative Glass: **Satin**



Door Colour: **Anthracite Grey**  
Shown as a Solid Door option



Door Colour: **Agate**  
Decorative Glass: **Etch Border** ■



# Georgian Two

U-Value from 1.2W/m<sup>2</sup>K

Affording a little more light, the two semi-circular panels create a modern distinctive style door.



Door Colour: Black | Decorative Glass: Murano Black ■



Door Colour: Anthracite Grey  
Decorative Glass: Gavalas ■



Door Colour: Blue  
Decorative Glass: Diamond Classic ▲ ●



Door Colour: Green  
Decorative Glass: Etch Border ■



Door Colour: Chartwell Green  
Decorative Glass: Georgian Bar ■





# Door Furniture

Add the finishing touches to your XtremeDoor with our wide range of door furniture including: letterplates and spyholes, as well as decorative urns/slimline urns. There's also a selection of finishes to choose from to enhance the colour and style of your XtremeDoor.

## Urns



White Black Chrome Gold Satin Silver

## Slim Urns



## Door Pulls



Chrome

Gold

Satin Silver

## Long Handles

Available in:  
600mm, 1200mm  
and 1800mm



## Spyholes



## Escutcheon



Satin Silver

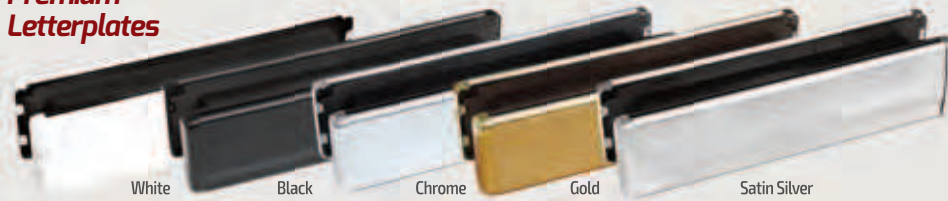
## Cylinder Pulls

Available in: Chrome, Gold, Satin Silver



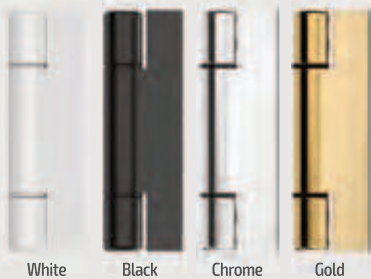
Spy viewers are supplied loose when a long bar handle is chosen that will block the view

## Premium Letterplates



White Black Chrome Gold Satin Silver

## Hinges



White Black Chrome Gold

## Traditional Range



Antique Black

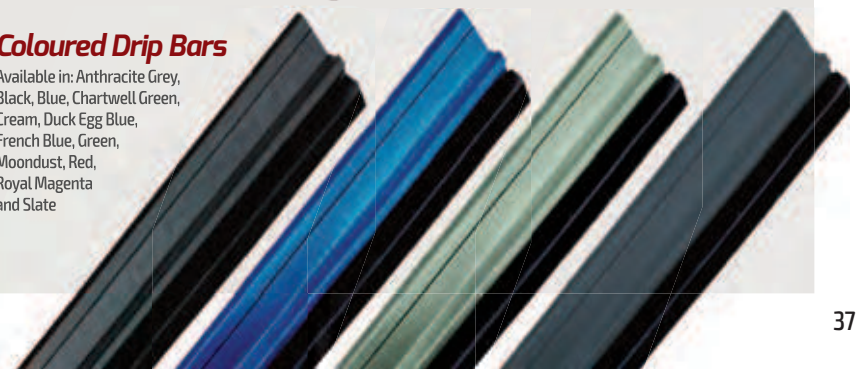
## Standard Letterplates

Available in: White, Black, Chrome, Gold



## Coloured Drip Bars

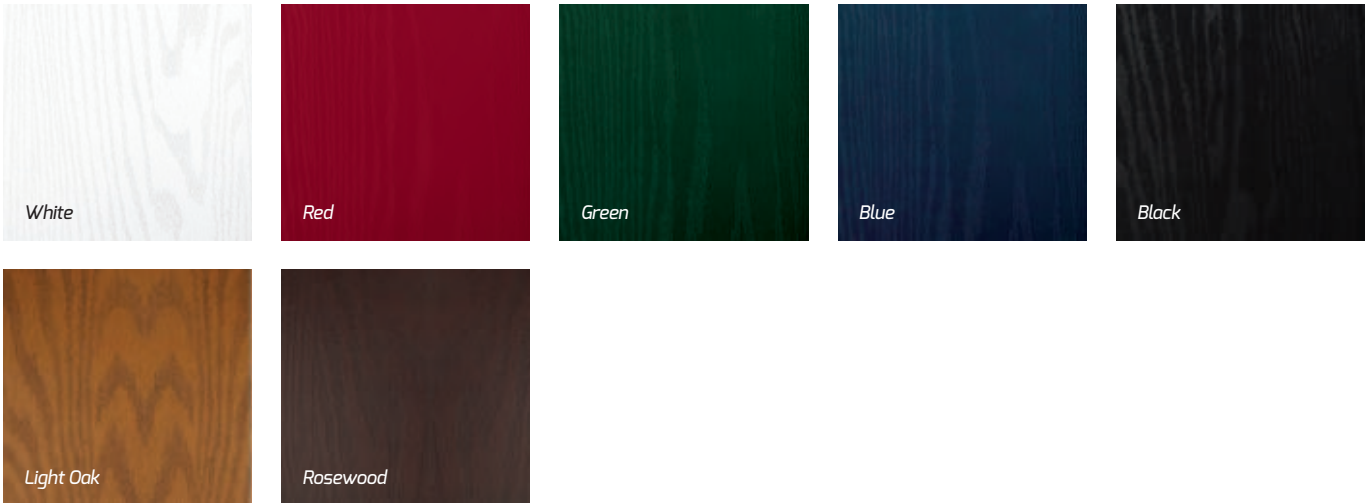
Available in: Anthracite Grey, Black, Blue, Chartwell Green, Cream, Duck Egg Blue, French Blue, Green, Moondust, Red, Royal Magenta and Slate



# Door Colour Options

Doors are supplied with white internal colour as standard, however coloured both sides is available on request. RAL numbers are for reference only. Different materials will give different shade variations when painted with the same RAL. Foiled frames and door slabs may appear slightly different due to the nature of the materials and light reflecting from them.

## Standard Colours



## Premium Colours



Match for Foiled Outer Frame



*Can't see the colour you really want?*

**No problem!** All doors and frames can be sprayed in any Classic RAL\* of your choice.

\* Additional costs and lead times apply. Fluorescent and Metallic colours excluded.



# Composite Sidelights

For homes with larger openings, we offer a range of sidelight options to complement your door.



York

Cambridge

Windsor (Left)

Windsor (Right)

Verona

Edwardian Four

Edwardian Two

Solid

## Colour Foiled Frames

Frames can be supplied coloured both sides on request. Frames can also be sprayed to any RAL number on request.



Anthracite Grey RAL7016  
with White Interior



Slate  
with White Interior



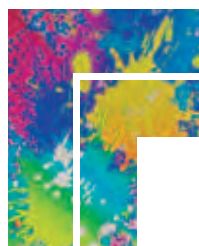
Black Ash/Brown\*  
with White Interior



Rosewood  
with Matching Interior



Rosewood  
with White Interior



Light Oak  
with Matching Interior



Light Oak  
with White Interior

As with our doors, the frames can be painted in any RAL colour\* of your choice with either a smooth or foiled finish.

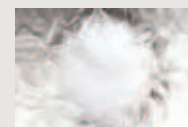
\* The foiled Black Ash/Brown frame may appear lighter than the black door in direct sunlight

## Textured Glass Options

There are lots of textured glass options to choose from, helping you maintain privacy in your home.



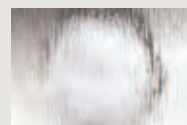
Arctic\*



Autumn\*



Chantilly\*



Charcoal\*



Contura\*



Cotswold\*



Digital\*



Everglade\*



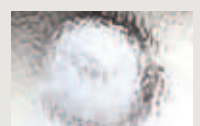
Flemish\*



Florielle\*



Mayflower\*



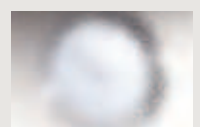
Minster\*



Oak\*



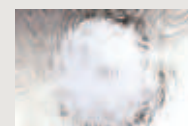
Pelerine\*



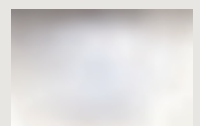
Stippolyte\*



Sycamore\*



Taffeta\*



Satin

\* Glass names are the trademark of Pilkington plc. Images are copyright of Pilkington plc. and reproduced by courtesy.

*#XtremeDoor*



[www.xtremedoor.co.uk](http://www.xtremedoor.co.uk)